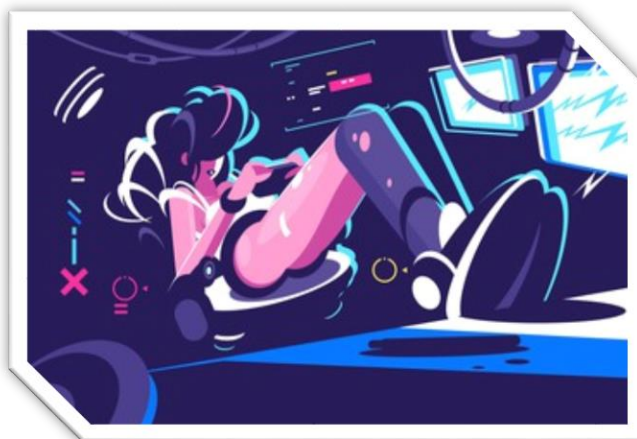


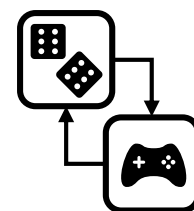
# SIDE QUEST | THE PATH OF CHAINS

## 1. GALS AND GAMING

### QUEST 1 WORLD 1



**VARIANT!**

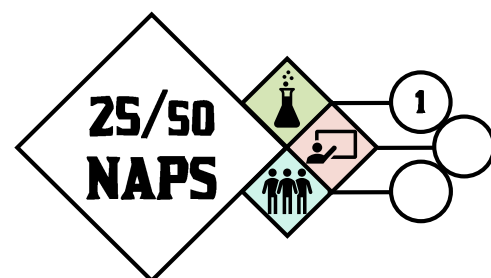


### Quest Objectives:

Watch *one* of the following feminist game criticisms and post a short (350 word) response in your Adventure Log. This will provide a great platform for our later discussions and your own projects.

- [GTFO: Women in Gaming](#) (1 hr. 15 min. documentary on the Gamer Gate scandal, misogyny in the gaming industry. Collective Eye Films. Free through UA library access).
- [Feminist Frequency: Tropes in Video Games](#) (This is a series, so choose a segment that is of interest to you other than *Part 1: The Damsel in Distress* which we will watch as a part of class).

Completing this Side Quest earns you  
**25 NAPS** (50 if you watch *GTFO*) and  
**1 Theory Badge**



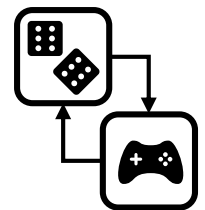
# SIDE QUEST | THE PATH OF CHAINS

## 1. GALS AND GAMING

### QUEST 1 WORLD 1



**VARIANT!**



### Quest Objectives:

Read *both* of the following excerpts from *D&D* Dungeon Master magazines written in the '70s. Remember, these were the primary publications that DMs (often called referees) would use to discuss rules and run games (things weren't as centralized as they are now).

When you're done, write a short (>350 word) response on your blog: What did you notice? What surprised you? How is this different than your experience with tabletop gaming now? Has TTRPG culture evolved from this? How can we contend with this legacy?

**CW:** Misogyny, sexual assault. These will probably make you mad.

- Excerpt from *The Dungeoneer's Compendium*. (Read pages 16-19).
- Excerpt from *Dragon Magazine*. (Read pages 7-10).

Completing this Side Quest earns you  
25 NAPS and 1 Theory Badge.

